

English Version

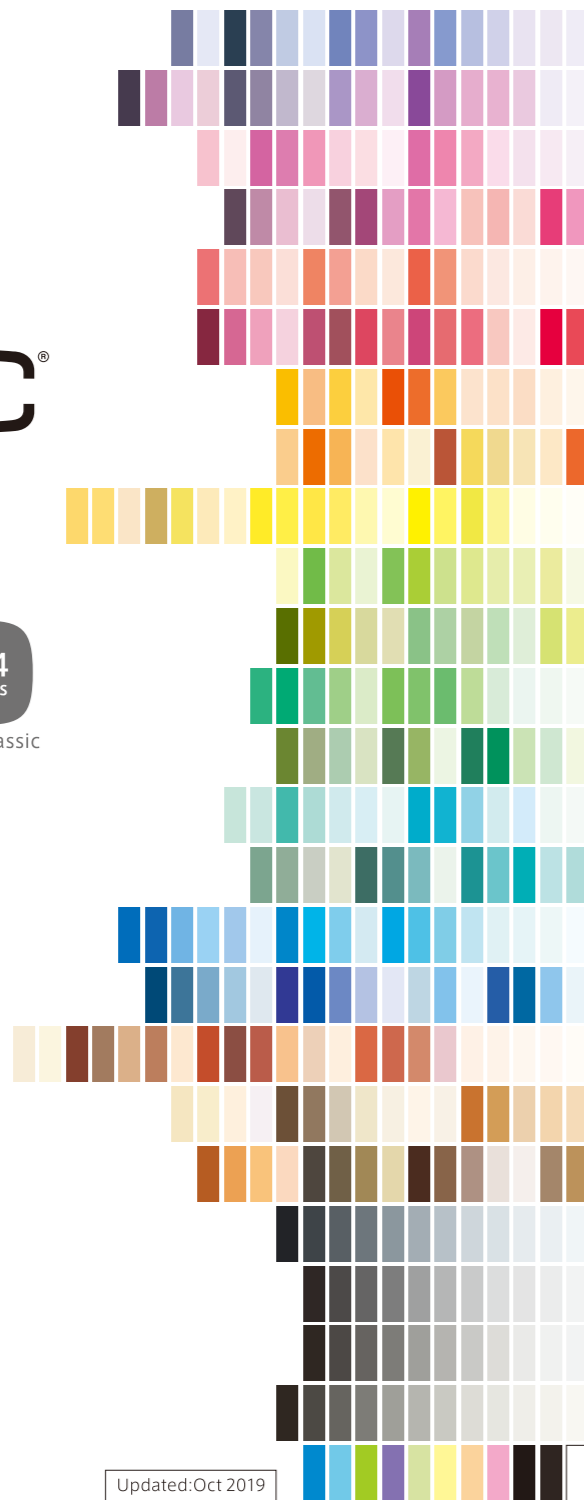
For use in Japan only

# COPIC®

358 colors  
copic sketch

180 colors  
copic ciao

214 colors  
copic classic



Updated: Oct 2019

.Too

## The highest quality markers

Copic markers were developed back in 1987 and now distributed in more than 55 countries around the world and receiving international acclaim.

These versatile markers are popular in a wide range of fields such as commercial design, comics/manga, illustration, caricature, cardmaking or model kits painting.

Copic markers are also used in activities at care centers or nursing homes and bringing the creative joy to many people regardless of age.



### IMPORTANT:

- Copic ink dries quickly. Always replace the cap after use.
- It is recommended to work with a piece of paper under your artwork to ensure the ink does not bleed through onto your workplace.
- Copic is long-life, economical marker system. All types of Copic are refillable, have replaceable nibs.

### CAUTION:

Due to a chemical reaction of the dye-based Copic ink with plasticizers contained in vinyl (such as PVC), color staining may occur. It's preferable to avoid putting up your artwork colored in Copic directly on the wallpaper.

## FAQ Frequently Asked Questions

Visit FAQ page on Copic official website  
<https://copic.jp/en/support/>

### Do you have any recommended type of Copic for beginners?

For beginners, we absolutely recommend Copic Ciao marker. It's also good idea to purchase the well-balanced Ciao 24 colors set which contains all the basic colors.

### Sketch vs. Ciao

Sketch is the standard marker and Ciao is the beginner marker in Copic family. Sketch has more colors and holds more ink. Ciao is less expensive, but they need to be refilled sooner and has the least color options. You can airbrush with Sketch but Ciao is not ABS (airbrushing system) compatible. Both have replacement nibs and the quality of ink is completely same.

### Is it allowed to take Copic Various Ink and/or Air Can as a carry-on onto a plane?

Since Copic Various Ink is flammable liquid, it is prohibited from carry-on and checked baggage by Aviation Law. This aviation law is also applied to aerosol cans containing compressed gas, but it is allowed as checked baggage. 2kg per person (almost the same amount as 30pcs of D60N Air Can) is allowed on the plane as checked baggage. For further information, please contact airline company or Japan Civil Aviation Bureau (a division of the Ministry of Land, Infrastructure, Transport and Tourism).

### Copic ink stays on my hands.

Copic ink is dye ink. It takes a little time to remove dye stains from the skin completely. Try regular soap and warm water first to see how much of it you can get off. You may use cleansing milk, oil-based makeup remover or #0 Colorless Blender.

### I spilled Copic ink on my clothes.

Copic ink is alcohol-based dye ink and cannot be easily removed from fabric. We strongly recommend that you seek the advice of the dry-cleaner's shop.

### Tell me the appropriate storage method.

Direct sunlight and high temperatures should be avoided.

### How the Copic markers should be stored? Flat or vertical?

Basically it would make no big difference whether you store your markers either upright or on their side as long as the ink is nearly-filled. In our pre-made sets, markers are placed with the Super Brush nib side up. However when the ink amount has decreased, we recommend you to keep Copic markers flat so that the ink saturates evenly on both nibs.

### Could you tell me the size of area I can color with a single marker?

Below is the average number of B4 size (257mm x 364mm) paper when painting whole area evenly with Broad nib:  
Sketch: Approx. 3.7 sheets    Classic: Approx. 5 sheets  
Ciao: Approx. 2.7 sheets    Wide: Approx. 9 sheets

### What is a difference between 100 Black and 110 Special Black?

100 Black is a slightly bluish black which will fit with Cool Grays. On the other hand, 110 Black is a bit reddish and we can say that it's closer to "ink black" or "deep black" compared with 100, and will fit with the Neutral Grays. The difference between these two blacks is very subtle but the blending amount of dyestuffs is greater in 100 Black.

A comparison by type of Copic	COPIC sketch	COPIC ciao	COPIC classic	COPIC WIDE
Shape	Oval	Round	Square	Wide oval
Number of colors	358 colors	180 colors	214 colors	
Original Marker (empty marker without ink)	○	×	○	○
Refillable with Various Ink	○	○	○	○
The number of times that one bottle can refill	Approx.13 times	Approx.17 times	Approx.10 times	Approx.7 times
Rough indication amount per refill	Approx.1.8ml	Approx.1.4ml	Approx.2.5ml	Approx.3.5ml
Refill amount for Copic Original (empty marker)	Approx.3ml		Approx.4ml	Approx.6ml
Nib replacement	○	○	○	○
Types of nib (★= Standard nib)	★Super Brush ★Medium Broad Sketch Fine	★Super Brush ★Medium Broad	★Standard Fine Super Fine Semi Broad Calligraphy 3mm ★Standard Broad Soft Broad Calligraphy 5mm Round Brush	★Extra Broad
Compatibility with Copic Airbrushing System (ABS)	○	×	○	×
Price	JPY 380 + tax	JPY 250 + tax	JPY 380 + tax	JPY 380 + tax



Too Marker Products Inc.  
[copic.jp/en](https://copic.jp/en)

※Copyright © 2019 Too Corporation All rights reserved.  
 ※The information in this manual is as of Oct 2019. It may change without prior notice for various reasons.  
 ※As a manufacturer we have responsibility in the quality of the product that we produce. If a manufacturing defect is found, we will be happy to replace your product.  
 ※This catalog is for domestic use. Indicated prices are applicable within Japan only.





# COPIC sketch

The Good Design Long Life Design Award winning product

## [358 colors]

Copic Sketch is the most popular among all the Copic markers. It comes in the widest range of colors, and features Medium Broad and flexible Super Brush nib combination. Ideal for illustration use.



358 colors (including #0 Colorless Blender)

JPY 380 each + tax Copic Sketch Original (empty marker) ...JPY 300 + tax

- Alcohol based ink
- Medium Broad nib and Super Brush nib
- Oval barrel
- Nib options are available
- Refillable
- Compatible with Copic Airbrush System
- For design/illustrations/manga/painting/craft/ educational use
- Recommended for professionals/enthusiasts

Copic Sketch Basic Sets:



Basic 24 Color Set is a combination of Basic 12 Color Set A and B.  
Basic 36 Color Set is a combination of Basic 12 Color Set A, B and C.

### Copic Sketch Manga Illustration 24 Colors

JPY 9,120 + tax

G03	YR15	E84	B04	BV13	N-6
R17	YR01	Y18	BG53	B63	N-4
R43	R000	Y04	BG000	BV000	N-2
RV52	R0000	Y000	B41	BV0000	BV20

Includes:

- \* Coloring Guide
- \* Line art for coloring practice

In the Coloring Guide, acclaimed illustrator Babiry reveals a handful tips and ideas so that you can learn all the basic technique for comic illustrations.



B000	BV000	W-1	W-4	W-7	0
YR000	Y00	C-1	C-4	C-7	100

### Copic Sketch Basic 12 A Colors

This basic set is a collection of grays and pale tones which provides the ideal combination representing the subtle nuances in shadows and lights. Great for the use in areas of art and design.

RV00	G000	E000	YR61	E11	E15
R43	YR65	Y02	G02	B12	BV11

### Copic Sketch Basic 12 B Colors

This set contains well-selected colors from various color families. A very useful set for shading and coloring skin tones. Perfect for the beginners of comic illustrations.

RV02	E18	Y08	G14	B16	BV13
R46	YR68	Y19	G19	B18	BV17

### Copic Sketch Basic 12 C Colors

Includes vivid, basic colors. This set is even more effective for expanding your range of expression when used in combination of Copic Sketch Basic 12 A and B sets.

E11	E15	W-1	W-4	W-7	0
E000	YR61	C-1	C-4	C-7	100

### Copic Sketch Basic 24 Colors

A well-balanced beginners set made by a combination of Copic Sketch Basic 12 A and B sets. This set offers a large selection of colors from various color families and ideal for the use in illustrations.

R43	YR65	Y02	G02	B12	BV11
RV00	YR000	Y00	G000	B000	BV000

R46	YR68	Y19	G19	B18	BV17	E18	100	0
R43	YR65	Y08	G14	B16	BV13	E15	C-7	W-7
RV02	YR61	Y02	G02	B12	BV11	E11	C-4	W-4
RV00	YR000	Y00	G000	B000	BV000	E000	C-1	W-1

### Copic Sketch Basic 36 Colors

With a combination of Copic Sketch Basic 12 A, B and C Colors, this set provides the excellent lineup of the basic colors in various color families. Recommended for everybody from beginners to Copic experts.



Basic 36 Colors



©Takashi Muto

# COPIC ciao

## [180 colors]

Copic Ciao provides the same great quality and experience as Sketch, but at a more attractive price.



180 colors (including #0 Colorless Blender)  
JPY 250 each + tax

Alcohol based ink Medium Broad nib and Super Brush nib ※Not compatible with Copic Airbrush System

Round barrel Nib options are available Refillable Child-safe cap

For design/illustrations/manga/painting/craft/ educational use Recommended for beginners

### Copic Ciao: 180 Colors

#### 72 Color Set A

36 Color Set A  
36 Color Set B

#### 72 Color Set B

36 Color Set C  
36 Color Set D

36 Color Set E

72 Color Set A is a combination of 36 Color Set A and B.

72 Color Set B is a combination of 36 Color Set C and D.

All 180 colors of Copic Ciao will become completed with a combination of 36 Color Set A, B, C, D and E.

### Copic Ciao Starters' 12 Colors Set

JPY 3,000 + tax

The 12 essential colors of Copic Ciao are selected for beginners. Copic ink will remain clean even when mixed. Your possibility is limitless even with these few colors! This set contains the same 12 colors featured in "START WITH 12 COLORS" guide book.

RV21 R000 YR31 E31 W-2 0  
R35 E93 Y02 BG23 B02 BV31



#### COPIC OFFICIAL GUIDE BOOK

#### START WITH 12 COLORS! COPIC ILLUSTRATION FOR BEGINNERS

Author: Babiry/Too Marker Products  
Publisher: Maar-Sha  
Spec: B5 size/ 68 pages

Official guidebook for Copic beginners! Popular illustrator Ms. Babiry explains Copic techniques in a comprehensible way. The line arts are contained so that you can start coloring immediately.



### Copic Debut Set

JPY 3,600 + tax

An another Ciao set perfect for beginners! This set includes well-selected 10 colors of Copic Ciao, Multiliner pens, Copic Sketchbook and an illustrated guide to basic Copic technique.

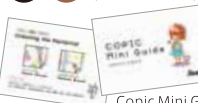


#### Contains:

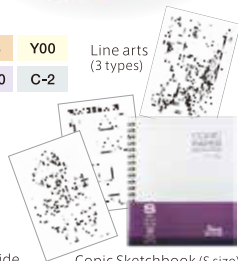
RV10 RV02 E00 E33 Y00 Line arts (3 types)  
YG23 G00 B00 BV00 C-2

Copic Ciao (10 colors)

Black Sepia Copic Multiliner (0.1mm, 2 colors)



Copic Mini Guide



Copic Sketchbook (S size)

### Copic Ciao 24 Colors Set

A well-balanced 24 colors set for the beginner of illustrations with Copic markers.

BV00	BV02	RV02	R20	R29	YR02	YR07	Y00	Y08	YG03	YG06	G00
G05	BG09	BG23	B00	B24	B29	E00	E21	E29	E37	C-3	100

BV00	BV02	BV08	V04	V09	V12	RV02	RV04	RV10	R20	R29	R32
YR02	YR07	YR20	Y00	Y06	Y17	YG03	YG06	YG11	G00	G05	G17
BG01	BG09	BG23	B00	B24	B29	E00	E21	E29	E37	C-3	100

BV04	V17	RV21	RV23	RV29	RV42	R02	R27	R59	YR00	YR04	Y02
Y08	YG41	YG67	G02	G21	G99	BG10	BG15	BG93	B05	B23	B32
B39	E02	E04	E08	E33	E35	E47	E51	C-1	C-5	C-7	0

BV13	BV23	BV31	V000	V06	RV000	RV06	RV13	R00	R05	R11	R22
YR16	YR23	YR31	YR61	Y11	Y15	Y21	YG00	YG23	YG63	G000	G07
G14	BG05	BG34	B02	B12	B60	B63	E11	E31	E50	E53	E71

BV17	BV29	V15	V91	V95	RV34	RV95	R17	R35	R37	R46	R85
YR68	Y28	Y38	YG91	YG95	G28	G85	G94	BG49	BG96	B45	B93
B95	B97	E43	E49	E57	E77	E93	E95	W-1	W-3	W-5	W-7

BV000	BV25	V01	V05	RV14	RV69	R000	R14	R81	YR000	YR15	Y000
Y35	YG09	YG17	G29	G82	BG000	BG13	BG72	B000	B18	B28	B99
E000	E15	E18	E25	E40	E41	E59	E79	C-0	C-2	W-0	W-2

BV00	BV02	BV04	BV08	V04	V09	V12	V17	RV02	RV04	RV10	RV21
RV23	RV29	RV42	R02	R20	R27	R29	R32	R59	YR00	YR02	YR04
YR07	YR20	Y00	Y02	Y06	Y08	Y17	YG03	YG06	YG11	YG41	YG67
G00	G02	G05	G17	G21	G99	BG01	BG09	BG10	BG15	BG23	BG93
B00	B05	B23	B24	B29	B32	B39	E00	E02	E04	E08	E21
E29	E33	E35	E37	E47	E51	C-1	C-3	C-5	C-7	0	100

BV13	BV17	BV23	BV29	BV31	V000	V06	V15	V91	V95	RV000	RV06
RV13	RV34	RV95	R00	R05	R11	R17	R22	R35	R37	R46	R85
YR16	YR23	YR31	YR61	YR68	Y11	Y15	Y21	Y28	Y38	YG00	YG23
YG63	YG91	YG95	G000	G07	G14	G28	G85	G94	BG05	BG34	BG49
BG96	B02	B12	B45	B60	B63	B93	B95	B97	E11	E31	E43
E49	E50	E53	E57	E71	E77	E93	E95	W-1	W-3	W-5	W-7

### Sets:

●24 Color Sets... JPY 6,000 + tax

●36 Color Sets

JPY 9,000 each + tax

●72 Color Sets

JPY 18,000 each + tax

### Copic Ciao 36 Colors Set A

This set of vivid colors contains a variety of greens and purples.

### Copic Ciao 36 Colors Set B

This set has the best collection of soft, warm colors. Recommended for the users want to improve the technique of blending or gradating.

### Copic Ciao 36 Colors Set C

Well-balanced set of light/pale colors which are not included in other 36 Color Sets.

### Copic Ciao 36 Colors Set D

Well-balanced set of dark colors which are not included in other 36 Color Sets.

### Copic Ciao 36 Colors Set E

Includes a wide range of neutral colors for the experienced users.

### Copic Ciao 72 Colors Set A

A combination of 36 Color Set A and B. Recommended for everybody from beginners to experts.

### Copic Ciao 72 Colors Set B

A combination of 36 Color Set C and D. Includes a wide range of neutral colors.



# COPIC classic

## [214 colors]

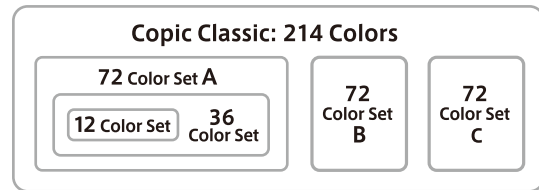
The Good Design Long Life Design Award winning product

Copic Classic is the very first marker of Copic family. For decades, Classic has been favored by professional designers of architecture/product/fashion/interior/etc all around the world.



214 colors (including #0 Colorless Blender)  
JPY 380 each + tax Copic Classic Original (empty marker) ...JPY 300 + tax

- Alcohol based ink
- Broad nib and Fine nib
- Compatible with Copic Airbrushing System
- Square barrel
- Nib options are available
- Refillable
- For design/illustrations/educational use
- Recommended for professionals/enthusiasts



©Testuo Fukuda

### Copic Classic 12 Colors Set

This is a trial set which includes 12 primary colors commonly-used in the field of design.

V09	RV11	R08	YR04	Y13	YG03	G17	B14	B29	B39	E09	100
-----	------	-----	------	-----	------	-----	-----	-----	-----	-----	-----

### Copic Classic 12 Colors Set CG

Includes various Cool Grays, and Black. Commonly used in education field.

C-0	C-1	C-2	C-3	C-4	C-5	C-6	C-7	C-8	C-9	C-10	100
-----	-----	-----	-----	-----	-----	-----	-----	-----	-----	------	-----

### Copic Classic 12 Colors Set NG

Includes various Neutral Grays, and Special Black.

N-0	N-1	N-2	N-3	N-4	N-5	N-6	N-7	N-8	N-9	N-10	110
-----	-----	-----	-----	-----	-----	-----	-----	-----	-----	------	-----

### Copic Classic 12 Colors Set TG

Includes various Toner Grays, and Colorless Blender.

T-0	T-1	T-2	T-3	T-4	T-5	T-6	T-7	T-8	T-9	T-10	0
-----	-----	-----	-----	-----	-----	-----	-----	-----	-----	------	---

### Copic Classic 12 Colors Set WG

Includes various Warm Grays, and Colorless Blender.

W-0	W-1	W-2	W-3	W-4	W-5	W-6	W-7	W-8	W-9	W-10	0
-----	-----	-----	-----	-----	-----	-----	-----	-----	-----	------	---

V09	RV11	RV29	R02	R08	YR04	YR24	Y11	Y13	Y15	YG03	G07
G17	G21	G28	B05	B06	B14	B29	B32	B39	E09	E29	E33
C-1	C-3	C-5	C-7	C-9	W-1	W-3	W-5	W-7	W-9	100	110

### Sets:

- 12 Color Sets  
JPY 4,560 each + tax
- 36 Color Sets  
JPY 13,680 + tax
- 72 Color Sets  
JPY 27,360 each + tax

### Copic Classic 36 Colors Set

Includes the basic colors commonly-used in the field of design. Acclaimed as one of the best teaching material in art education.

### Copic Classic 72 Colors Set A

Includes the plentiful basic colors which are commonly-used in the field of design. Great choice for starting your Copic experience.

BV08	V06	V09	RV04	RV09	RV11	RV17	RV19	RV29	R02	R08	R27
R32	R37	YR00	YR04	YR07	YR09	YR14	YR18	YR23	YR24	Y06	Y11
Y13	Y15	Y21	Y26	YG03	YG13	YG23	YG91	YG95	YG97	YG99	G07
G17	G21	G28	G99	BG09	BG10	BG15	BG18	B05	B06	B14	B23
B26	B29	B32	B34	B37	B39	E09	E29	E33	E37	E44	C-1
C-3	C-5	C-7	C-9	W-1	W-3	W-5	W-7	W-9	0	100	110

### Copic Classic 72 Colors Set B

A well-balanced set which includes a wide variety of primary colors, pale tones and grays.

BV00	V04	RV06	RV14	R17	R20	R29	R35	Y00	Y02	Y17	YG01
YG17	G02	G16	G29	BG02	BG05	BG13	BG99	B00	B01	B02	B04
E04	E07	E11	E13	E15	E19	E25	E27	E31	E34	E40	E49
C-0	C-2	C-4	C-6	C-8	C-10	N-0	N-1	N-2	N-3	N-4	N-5
N-6	N-7	N-8	N-9	N-10	T-0	T-1	T-2	T-3	T-4	T-5	T-6
T-7	T-8	T-9	T-10	W-0	W-2	W-4	W-6	W-8	W-10	100	110

### Copic Classic 72 Colors Set C

Contains a rich selection of neutral colors for the experienced users. Your Copic Classic collection is completed if you use this set in combination with the 72 Color Set A and B.

BV04	BV23	BV31	V12	V15	V17	RV02	RV10	RV13	RV21	RV25	RV32
RV34	R00	R05	R11	R24	R39	R59	YR02	YR16	YR21	Y08	Y19
Y23	Y38	YG05	YG07	YG09	YG11	YG21	YG25	YG41	YG45	YG63	YG67
G00	G05	G09	G12	G14	G19	G20	G24	G40	G82	G85	BG11
BG32	BG34	BG45	BG49	B12	B16	B18	B21	B24	B41	B45	E00
E02	E21	E35	E39	E41	E43	E51	E53	E55	E57	E59	E77



## Copic Various Ink [358 colors]

All 358 marker colors have a matching ink refill. You can also create your custom colors using empty bottle.

Contains: 25ml (c.c)  
358 colors (including #0 Colorless Blender)  
JPY 380 each + tax Empty bottle ... JPY 180 + tax

\*The sale ends when all the distribution stock is sold out.  
\*Successor item will be coming soon.

### CAUTION

- ◎Various Ink is alcohol based and combustible. Keep the product away from high temperatures or direct sunlight.
- ◎Avoid contact with eyes, mouth and clothing.
- ◎If the Various Ink has entered the eyes, do not rub, and flush with water immediately. Seek medical attention if necessary.
- ◎Ink nozzle is designed with small hole for ejecting small drops of ink. When open the cap, hold a Various Ink bottle upright and twist the cap in the arrow mark direction while pushing the narrow side of bottle very lightly. Do not push the wider side of bottle or it may cause ink splashing when being opened.
- ◎Always close the cap after use.



### Copic Colorless Blender (200ml)

Economy-size Copic Colorless Blender (No. 0). Comes in handy when you create a lighter color and it's also a good tool for cleaning up your markers.

200ml(c.c.) ... JPY 1,500 + tax

## Refilling the ink



1. Remove the cap of both ends.
2. Hold the marker at an angle and drip Various Ink onto the broad nib, one drop at a time.



**For Copic Wide:**  
Hold Copic Wide at an angle, then place the ink nozzle in a notch and drip Various Ink onto the nib.

- ※Make sure to check the fullness by measuring guides (1cc/1ml per guide) on the bottle every few drops.
- ※Before refilling your marker, remove the cap of both ends to make ink thoroughly penetrates inner cotton (ink reservoir). Do not overfill the marker with too much ink. Overfilled ink may drip onto your work.

	Sketch	Ciao	Classic	Wide
The number of times that one bottle can refill	Applox. 13 times	Applox. 17 times	Applox. 10 times	Applox. 7 times
Rough indication amount per refill	Applox. 1.8ml	Applox. 1.4ml	Applox. 2.5ml	Applox. 3.5ml
Refill amount for Copic Original (empty marker)	Applox. 3ml	—	Applox. 4ml	Applox. 6ml

### CAUTION

- ◎Various Ink is alcohol based and combustible. Keep the product away from high temperatures or direct sunlight.
- ◎When the amount of ink exceeds tolerable amount of inner cotton (ink reservoir), ink may leak.

## Copic Original (empty marker) [3 Types]

These empty marker allow you to expand your collection by using Various Ink to fill them up, or mix some inks to create your own custom colors.

- Copic Classic Original (empty marker) ... JPY 300 + tax
- Copic Sketch Original (empty marker) ... JPY 300 + tax
- Copic Wide Original (empty marker) ... JPY 380 + tax

### Copic Wide Original (empty marker)

Copic Wide is the best choice for coloring large areas with consistent stroke. Ideal for rendering in product design, and drawing architectural perspectives.

- Extra Broad nib (21mm) Nib options are available Refillable
- For design/illustrations/educational use

Expand your color collection with Various Ink and Wide Original (empty marker).



## How to Create Your Own Color

1. Mix some Copic Various Inks of your choice using empty bottle to create your own custom color.
2. Pour a custom color to Copic Original (empty marker).



## Spare Nibs & Optional Nibs

These nibs allow for longevity of your markers.

### Spare Nibs for Copic Sketch & Ciao

Exclusive spare nibs for Copic Sketch & Copic Ciao marker.

- Super Brush (3pcs/pack) ... JPY 380 + tax
- Medium Broad (10pcs/pack) ... JPY 380 + tax

### Optional Nibs for Copic Sketch

Fits light gray end (Medium Broad nib side) of Copic Sketch.

- Sketch Fine (3pcs/pack) ... JPY 380 + tax

### Spare Nibs for Copic Wide

- Spare Nibs for Copic Wide Extra Broad (2pcs/pack) ... JPY 380 + tax

- Tweezer (1pc/pack) ... JPY 380 + tax

### Spare/Optional Nibs for Copic Classic

You can replace the standard nib for Copic Classic with a variety of Optional nibs according to the intended use. Except for standard (Spare) nibs, identification sticker is included.

- For thick line drawing Exclusive replacement nibs for Broad nib  
10pcs/pack ... JPY 380 each + tax (Brush type: 3pcs/pack)
- For fine line drawing Exclusive replacement nibs for Fine nib  
10pcs/pack ... JPY 280 each + tax

- [Standard Broad] Spare for standard Broad nib
- [Soft Broad] Rounded edge delivers smooth touch
- [Calligraphy 5mm] Ideal for illustrations and decorative lettering
- [Round] Provides line variation and smooth touch
- [Brush] Responsive and flexible brush nib
- [Standard Fine] Spare for standard Fine nib
- [Super Fine] Plastic-made nib provides extra fine line
- [Semi Broad] Broad-type nib with narrower width
- [Calligraphy 3mm] Ideal for illustrations and decorative lettering

## Replacing the nib

1. Using the tweezers, pull the nib out of the marker slowly to avoid splash of ink.
2. Carefully insert the new nib.
3. It may take a little time until the ink penetrates the new nib and the color becomes stable.



### CAUTION

- ◎Be careful not to spill the ink when you pull the nib out of the marker.
- ◎If the amount of ink is decreased in inner cotton, the penetration of ink into the new nib will be slower than usual. Refill with the ink in that case.
- ◎After replacing the nib, it may take a little time until the color becomes stable.

# Copic Multiliner [10 Colors]

The all-purpose Copic Multiliner inking pen is pigment-based and Copic-proof, meaning that once dry, the ink will not bleed when colored over with Copic markers. Multiliner comes in a variety of colors and pen sizes and it's ideal for illustrations, manga inking or any projects requiring consistent line flow and precision.

Water based pigment ink (becoming waterproof when dry) Acid-free For illustrations/manga inking/sketch/writing use

JPY 200 each + tax



● Black Pen size : 0.03/0.05/0.1/0.3/0.5/0.8/1.0mm



● Cool Gray Pen size : 0.03/0.05/0.1/0.3/0.5mm



● Warm Gray Pen size : 0.03/0.05/0.1/0.3/0.5mm



● Sepia Pen size : 0.03/0.05/0.1/0.3/0.5mm



● Brown Pen size : 0.03/0.05/0.1/0.3/0.5mm



● Wine Pen size : 0.05/0.1/0.3/0.5mm



● Cobalt Pen size : 0.05/0.1/0.3/0.5mm



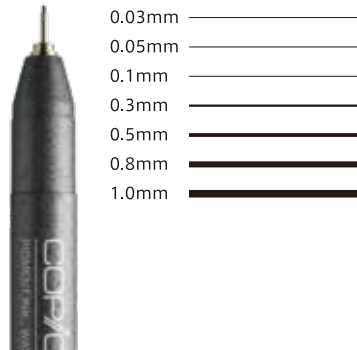
● Olive Pen size : 0.05/0.1/0.3/0.5mm



● Pink Pen size : 0.03/0.05/0.1/0.3/0.5mm



● Lavender Pen size : 0.03/0.05/0.1/0.3/0.5mm



## [Multiliner set]

● Black A-2 Set (7 pen sizes) ... JPY 1,400 + tax

● Black B-2 Set (7 pen sizes + 2 brush pens) JPY 1,900 + tax

## [Multiliner 4pcs Set]

● Black A-2 Set (0.03/0.05/0.1/0.3) ... JPY 800 + tax

● Black B-2 Set (0.5/0.8/BS/BM) ... JPY 900 + tax

● Cool Gray ● Warm Gray ● Sepia

● Brown ● Pink ● Lavender

Pen size: 0.05/0.1/0.3/0.5mm ... JPY 800 each + tax



● 4 Colors Set ... JPY 800 + tax

Pen size: all 0.3mm  
Sepia/Wine/Cobalt/Olive



## [Brush type]

BS (brush pen for fine line) BM (brush pen for thick line)



● Black ... JPY 250 each + tax ● Sepia ... JPY 250 each + tax

## [Copic Multiliner CM and CS]

The new Copic Multiliner specially developed for calligraphy/card making purposes! Ink does not blur on the paper and offers a wide range of representation from sharp fine lines to blurred wide lines.



©Makiko Odawara

CM: Calligraphy M The most used linewidths in calligraphy.

CS: Calligraphy S Ideal for intricate, detailed expressions.

● Color: Black ... JPY 250 each + tax



● Copic Multiliner Calligraphy 2pcs Set (CS/CM) ... JPY 500 + tax

## Line Widths of Copic Multiliner

	0.03	0.05	0.1	0.3	0.5	0.8	1.0	BS	BM	CS	CM
Black	●	●	●	●	●	●	●	●	●	●	●
Cool Gray	●	●	●	●	●	—	—	—	—	—	—
Warm Gray	●	●	●	●	●	—	—	—	—	—	—
Sepia	●	●	●	●	●	—	—	●	●	—	—
Brown	●	●	●	●	●	—	—	—	—	—	—
Wine	—	●	●	●	●	—	—	—	—	—	—
Cobalt	—	●	●	●	●	—	—	—	—	—	—
Olive	—	●	●	●	●	—	—	—	—	—	—
Pink	●	●	●	●	●	—	—	—	—	—	—
Lavender	●	●	●	●	●	—	—	—	—	—	—

**CAUTION** If the Multiliner's ink bleeds when colored over with Copic markers, it's thought that the root cause is insufficient fixation with paper. In that case let the ink dry well then carefully rub off pigment on the surface of paper with an eraser.

## GENERAL CAUTION

- ◎ Do not drop or shake the pens because the ink may leak out.
- ◎ Open the cap carefully to avoid splashing ink.
- ◎ The pen will dry out fast if it is left uncapped. Always recap tightly after use.
- ◎ Do not store in a high temperature. ◎ Keep Out of Reach of Children.



# Copic Multiliner SP

Copic Multiliner SP pen is designed for a lifetime of use – Its ink cartridge and nib can be replaced as needed. The durable aluminum body feels smooth in your hand, and tips are very sturdy even in smaller pen sizes. This pen contains the same Copic-proof, black pigment ink as Multiliner.

- Water based pigment ink (becoming waterproof when dry) Replacable nib
- Replacable ink cartridge Acid-free
- For rendering/illustrations/manga inking/sketch/writing use



Pen size : 0.03/0.05/0.1/0.2/0.25/0.3/0.35/0.5/0.7mm/BS... JPY 540 each + tax

## [Single items]



	0.03	0.05	0.1	0.2	0.25	0.3	0.35	0.5	0.7	BS
<b>Nibs</b>	2pcs/pack JPY 300 each + tax			2pcs/pack JPY 190 each + tax			1pc/pack JPY 110 each + tax			
<b>Ink</b>	Cartridge A JPY 160 + tax			Cartridge B JPY 160 + tax						
<b>Tool</b>	SP Changer (replacement tool for nib and ink cartridge)... JPY 200 + tax									

### CAUTION

- Do not replace the nib and cartridge on your project.
- Do not insert and remove the nib and cartridge unnecessarily.
- Store the spare ink cartridges horizontally.
- When replacing a nib, make sure the size is same.

- 0.03mm
- 0.05mm
- 0.1mm
- 0.2mm
- 0.25mm
- 0.3mm
- 0.35mm
- 0.5mm
- 0.7mm



### [Set]

●Copic Multiliner SP 10A Set (includes all pen sizes)... JPY 5,400+ tax

## How to replace the nibs

### 1. Using a coin:



● Place a coin into the groove of metal nib holder and remove the nib with thumb as illustrated.

### 2. Using SP Changer:



● Place the small end of a SP Changer into the groove of metal nib holder and remove the nib with thumb as illustrated.

※Remove the nib by slowly pushing it with thumb, in the direction of the arrow. Do not try to remove the nib with the hand holding a SP Changer, otherwise the nib will pop out.

● Insert spare nib. The ink will flow after a while. If the ink does not come out, the nib may not have contacted the ink reservoir properly. Remove the nib and try again.

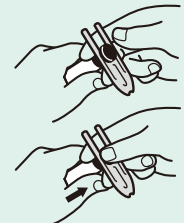
## How to replace the ink cartridges

### 1. Using a coin:



● Place a coin into the groove of ink cartridge's end cap and remove it with thumb as illustrated. Then replace with new ink cartridge. Push the cartridge straight into the body and you will hear a click.

### 2. Using SP Changer:



● Place the large end of a SP Changer into the groove of ink cartridge's end cap and remove it with thumb as illustrated. Then replace with new ink cartridge. Push the cartridge straight into the body and you will hear a click.

# Copic Gasenfude Brush Pen

Gasenfude brush pen has a flexible synthetic brush nib which creates expressive line variations. Water based pigment ink is Copic-proof - When the ink dries, it will not bleed when colored over with Copic markers.

- Water based pigment ink (becoming waterproof when dry) Acid-free For illustrations/sketch/card making/writing use



JPY 380 + tax

### CAUTION

Do not drop or shake the pen because the ink may leak out. The stains on clothes may not wash off. Always carry with the nib upward.

# Copic Drawing Pen F Series

Copic Drawing Pen is made for those who prefers the feel of a fountain pen, but you don't need to worry about the mess of a dipping well. This pen provides a variety of line sizes by simply changing the writing pressure.

- Water based pigment ink (becoming waterproof when dry) Acid-free For manga inking/sketch/writing use



●Black ●Sepia

Line width can be adjusted by the pen pressure

JPY 300 each + tax

### CAUTION

- Test the pen until the ink flows smoothly.
- Not recommended for use with water colors.

## Care for Copic Drawing Pen

Copic Drawing Pen is a delicate writing instrument. Like a fountain pen, special care should be taken when handling Copic Drawing pen, specially super fine F01.

Use Drawing pen every day, even if it is very short time. It contributes to the maintenance of condition of tip.

Always recap tightly after use. The pen will dry out if it is left uncapped.

If it isn't writing properly, check that the flow-channel is not clogged with fibers of paper. To remove clogged fibers, pull away the tip from the pen and wipe gently with paper towels.

\* Never shake the pen because the ink may leak out.



# PAPER SELECTIONS

When you seek to select the best paper, you will be faced with an overwhelming number of options. The result would be completely different depends on the type or color of paper - Copic Paper Selections helps you to find the right choice.

A4 ... JPY 500 each + tax



## ●PM Paper

20 sheets/pack Thickness: 68g/m<sup>2</sup>

This thin, coated paper is suitable for tracing, inking or traditional marker rendering with colored pencil/pastel accents. Doesn't bleed through. Great for clean, crisp, bold colors.

This high quality paper with smooth texture is great for blending colors.



## ●Premium Bond Paper

20 sheets/pack Thickness: 157g/m<sup>2</sup>

High-quality paper with super-smooth texture. Slightly off-white in tone. This uncoated, medium weight paper is great for blends and special effects.



Its outstanding whiteness can get the most out of vividness of Copic.



## ●Custom Paper

20 sheets/pack Thickness: 150g/m<sup>2</sup>

High-quality copy paper with super-smooth texture. Excellent color property. Suitable for manga and general illustration. Great for blends and special effects.

Easy to blend, good for gradation effect.



## ●Thick Marker Paper

20 sheets/pack Thickness: 186.7g/m<sup>2</sup>

Soft, thick, uncoated paper with slightly textured surface. Great for watercolor, pencil, and mixed-media. Easy to blend, good for special effects like feathering technique.



The Japanese paper-like soft fiber is ideal for expression of watercolors.



## ●Soft Watercolor Paper

5 sheets/pack Thickness: 100g/m<sup>2</sup>

This medium weight, coated paper features extra soft fibers for a watercolor look. Doesn't bleed through. Good for soft color expression.

# Drawing papers



※Each PM Pad is slightly larger than the standard size.

## PM Pad White 50 sheets/pad

This long-seller paper pad features non-bleedthrough PM Paper which is extremely versatile and suitable for a variety of mediums such as marker, pastel and pencil. The paper has moderate transparency and good developed colors.

B2... JPY 3,650 + tax B3... JPY 1,880 + tax B4... JPY 1,000 + tax B5... JPY 550 + tax  
A2... JPY 2,450 + tax A3... JPY 1,270 + tax A4... JPY 660 + tax



## Copic Sketchbook Acid-free 30 sheets/book

Copic Sketchbook features a high-quality Premium Bond Paper. This medium weight paper with super-smooth texture is great for color blending and special effects.

Available in two sizes.

**L size** (240mm×305mm) ...JPY 1,200 + tax **S size** (148mm×185mm) ...JPY 600 + tax  
**Square** (110×110 mm) ...JPY 500+ tax **NEW**



## Copic Shikishi Illustration Board Acid-free

Copic Shikishi Illustration Board made from high quality Custom Paper laminated to a hard board backing. Clean white, smooth surface is ideal for coloring with marker and it provides bright coloration and good blendability. Also it's great for inking with pen, and pencil lines are easily erased without damaging paper fibers. 3 sizes are available.

**Large** (273×242mm) ... JPY 200 + tax **Medium** (212×182mm) ... JPY 180 + tax  
**Small** (136×120mm) ... JPY 120 + tax



## PM Copy

Standard size PM Paper for photocopying use. Precisely trimmed to prevent a paper jam or powder blow.

50 sheets/pad 250 sheets/pad  
A3... JPY 1,400 + tax A3... JPY 6,270 + tax  
B4... JPY 1,080 + tax B4... JPY 4,620 + tax  
A4... JPY 750 + tax A4... JPY 3,200 + tax



## Copic Coaster Card **NEW**

Acid-free 8cards/pack

Use this Coaster Card as a unique greeting card or a rounded illustration board! High-quality Premium Bond Paper gives an excellent color definition and a super-smooth surface.



## Copic Postcard ... JPY 400 + tax

Acid-free 20 sheets/pack Thickness: 68g/m<sup>2</sup>

An extremely-thin film is hiding between the layer of white, smooth paper so that the ink does not bleed through to the address side of card.

## Copic Airbrushing System (ABS)

An innovative Copic Airbrushing System (ABS) allows you to easily obtain airbrush effects, and color on a wide variety of surfaces and textures. Simply snap a Sketch or Classic marker into the system and you are ready to go.

Simple airbrushing system

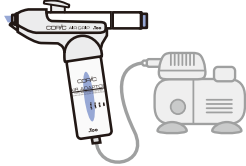
※Copic Ciao cannot be used with ABS.



The Good Design  
Long Life Design Award  
winning product



●Air Can Set ... JPY 2,400 + tax



●Air Adaptor Set ... JPY 2,500 + tax



Includes:  
Air Grip,  
Air Can 60N



Includes:  
Air Grip,  
Air Adaptor

※Compressor and air hose are sold separately  
※Air pressure must be maintained around 0.3MPa.  
※To connect with Air Adaptor, use G1/8 (PF1/8) air hose.

### [Single parts]



●Air Grip  
JPY 1,500 + tax



●Air Can D60N  
JPY 900 + tax



●Air Adapter  
JPY 1,000 + tax

### CAUTION

◎Make a test spray before creating a background. Most colors will look different when airbrushed, and granular feeling changes depending on applied distance and air pressure.  
◎For continuous, long term spraying, we recommend using the compressor instead.



### CAUTION

◎Use in an area with good air circulation and wear a mask when you work.  
◎Keep away from open flame.  
◎To attach Air Grip to Air Can, use the D60.  
◎Do not spray on people or animals.



## Copic Opaque White **NEW**

Copic Opaque White has good opacifying properties and provides highlights and details easier than ever. This thick white paint won't bleed into the base color and allows for sharp expression. Great for adding the final touches to your artwork.

※Do not apply colors on top of Opaque White.

●10ml (c.c.)... JPY 800 + tax ●6ml (c.c.) with brush... JPY 800 + tax



## Storages



\*Markers are sold separately.

### ●Copic Wallet **NEW**

Copic Wallet is a great way to keep Copic markers organized. Folds to stand upright or lay flat. All sizes have a zipper pocket for extra storage. All sizes can hold Copic Classic, Sketch and Ciao markers.

for 24pc...JPY 1,800 + tax  
for 36pc...JPY 2,600 + tax  
for 72pc...JPY 3,600 + tax



### ●Copic Carrying Pouch... JPY 1,600 + tax

This handy carrying pouch with removable shoulder strap makes transporting your Copic collection easy. Detachable divider and shoulder strap are attached.

Holding up to:  
48pcs of Copic Sketch (50pcs without divider)  
57pcs of Copic Ciao (58pcs without divider)  
34pcs of Copic Classic (35pcs without divider)  
Dimensions: Approx. 120×160mm

### ●Block Stand... JPY 2,000 + tax

This expandable Block Stand will stand vertically or horizontally. Each block holds up to 36 Classic markers.

### ●Wire Stand... JPY 5,500 + tax

This metal wire stand will help you to organize and display your markers stylishly. It holds up to 72 Classic/Sketch markers.



## Copic Plastic Color Solid Chips Set

Copic Plastic Color Solid Chip is an innovative product that facilitates color communication in a variety of occasions. 288 colors were carefully selected so that you can select colors intuitively.

JPY 48,000 + tax



## Books

### ●START WITH 12 COLORS! COPIC ILLUSTRATION FOR BEGINNERS

JPY 1,200 + tax  
Author : Babiry/Too Marker Products  
Publisher : Too Marker Products Inc.  
Spec : A4 size / 68 pages / All Color  
Language : English



### ●COPIC MANIACS 1 Manga Illustration Coloring & Materials

JPY 800 + tax  
Author : Toru Terada / Garu Okada  
Publisher : Too Marker Products Inc.  
Spec : A4 size / 48 pages / All Color  
Languages : English



A long-awaited English version of very popular official Copic guidebook START WITH 12 COLORS! COPIC ILLUSTRATION FOR BEGINNERS! Size is slightly larger than Japanese version, with an improved design and layout.

Learn Copic techniques from basics in the most fun way! In this book, many tips and tricks are disclosed by internationally acclaimed professional illustrators Mr. Toru Terada and Ms. Garu Okada.